



A NATURAL ELEVATION

A limited collection of fifteen exclusive residences, The Lansell is nestled within a secluded natural landscape on one of Toorak's most coveted addresses, 16 Lansell Road.

The Lansell

TOORAK





The Lansell  
MODERN



The Lansell  
TOORAK  
TOORAK





# The Journey

INTRODUCTION - 9

# A Natural Elevation

DESIGN RESPONSE - 11

# The Forest Floor

GROUND FLOOR RESIDENCES - 25

# Intelligently Considered

INTERIOR SPACES - 35

# Connections To The Canopy

PENTHOUSE RESIDENCES - 51

# The Fabric Of Toorak

LOCAL AREA - 63

# Makers & Creators

TEAM & COLLABORATORS - 77



Each home is individually crafted to meet the needs of its residents, and to reflect the character of this location: private, considered, exceptional.

The Lansell, is situated within one of the most exclusive residential neighbourhoods of Melbourne where beautiful homes grace quiet and wide, tree-lined streets.

The large site on which The Lansell sits is truly a jewel. Rising gently from the street, the site provides commanding views of the Melbourne city skyline and the tranquil and lush gardens of this exclusive area and its surrounds.

A team of award-winning professionals have been gathered by developer SHC Group to conceive a collection of exclusive homes which intends to establish a new benchmark of luxury living in Melbourne. The team includes K2LD Architects who have designed a number of award winning homes in Melbourne and Singapore, and Jack Merlo; renowned landscape architect of many prestigious gardens in the local area.

Together they have collaborated to bring this development to life, alongside consultants, specialists and premium suppliers such as Hansgrohe and Gaggenau in aspiration to create a truly timeless project.





# A Natural Elevation

DESIGN RESPONSE



# Design Response

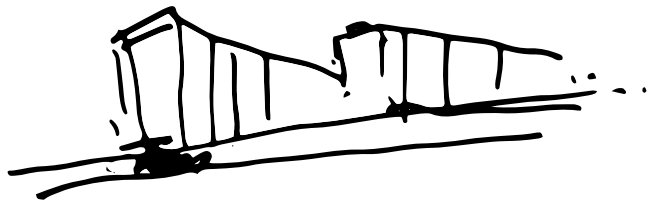
Architects often believe that the land will tell you its story. As such, the design response has been greatly inspired by the nature of the gently rising site and its commanding landscape.

Working with the elevation of the landform and the established and mature landscape surrounds, the architects have created a graceful and timeless form that nestles into the hill and is enveloped by gardens all round. By placing the homes around 2 cores with a courtyard garden between, all apartments enjoy generous views and light filled living on all sides.

Generous set-backs are complemented by expansive landscaped gardens and terraces, enabling each home to feel like a luxurious private residence integrated into the fabric of Lansell Road.

At ground level, residences enjoy private gardens that are terraced along the rising slope, with every home designed to have a strong sense of connection to the outdoors. On the upper levels, generous openings in the façade continue to engage with the expansive landscape surrounds with incredible views of the locale.

Upon entry, The Lansell also takes advantage of the rising terrain by providing ease of access from the boulevard and by car. A sense of welcome and warmth greets you at each lobby, accentuated with dramatic skylights and enhanced by a palette of natural and calming materials.

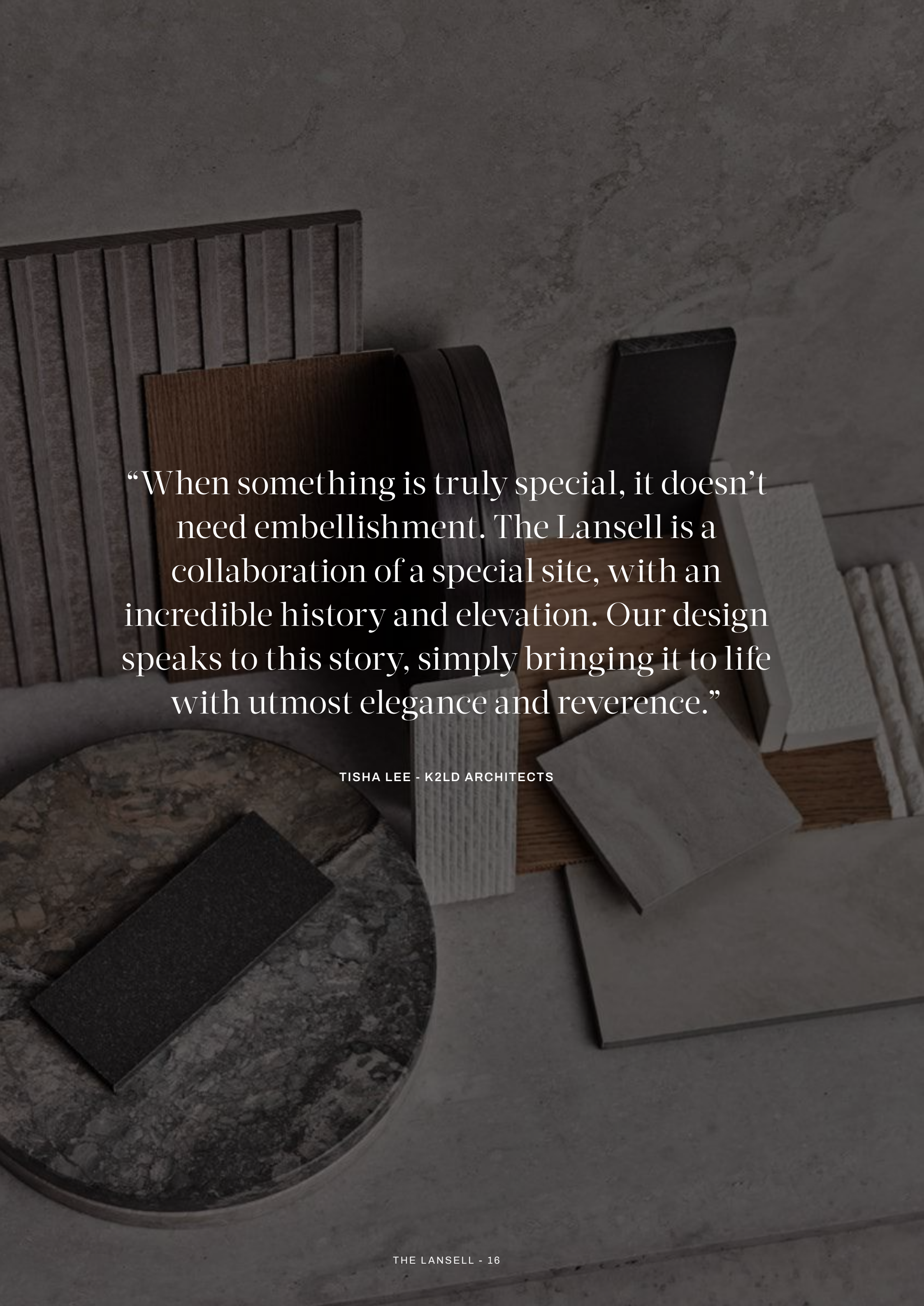


## Early Development (2018)

K2LD Architects have carefully worked with the context and landform to create a building that nestles gently into its surrounds. The stature and form play to the unique strengths and characteristics of the lush and verdant site.







“When something is truly special, it doesn’t need embellishment. The Lansell is a collaboration of a special site, with an incredible history and elevation. Our design speaks to this story, simply bringing it to life with utmost elegance and reverence.”

TISHA LEE - K2LD ARCHITECTS



**Selected Materiality (2019)**

A timeless and sophisticated palette of texture, detail and quality describes the materials that have been selected to complement the iconic nature of The Lansell.







Jack Merlo - Kenley, Toorak

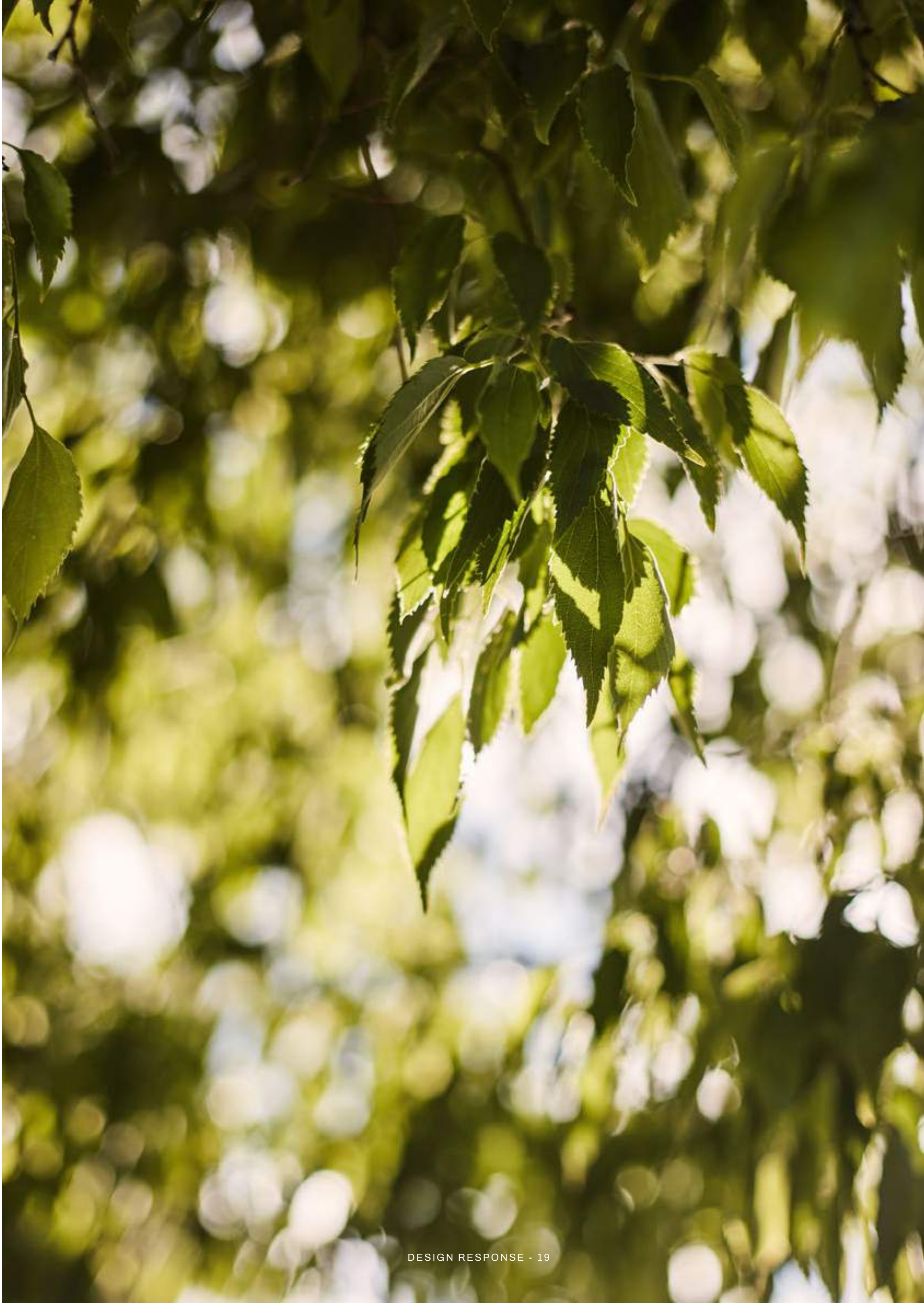
## Landscaping & Gardens

The landscaped garden has been created by Jack Merlo; award-winning designer known for his impeccable designs that elevate outdoor living through principles of beauty, harmony & sustainability.

This expansive landscape for The Lansell has been designed to intrigue all of the senses, addressing not only the aesthetics but providing beauty in fragrance, touch and colour.

The terracing and slope of the site have also presented an opportunity to provide many layers of plantings with taller plants around the perimeter that provide additional screening, whilst a mid-layer and ground cover provides a three-dimensional effect.

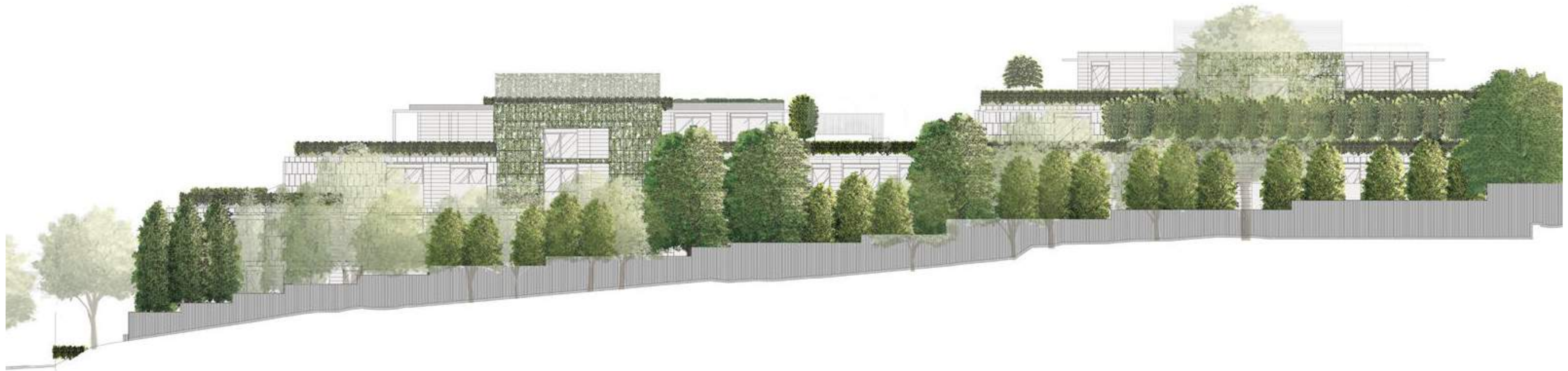
A number of significant trees have been retained and together with a careful selection of complimentary plants, the gardens create a mature but precise form, creating generous private outdoor spaces to be appreciated.





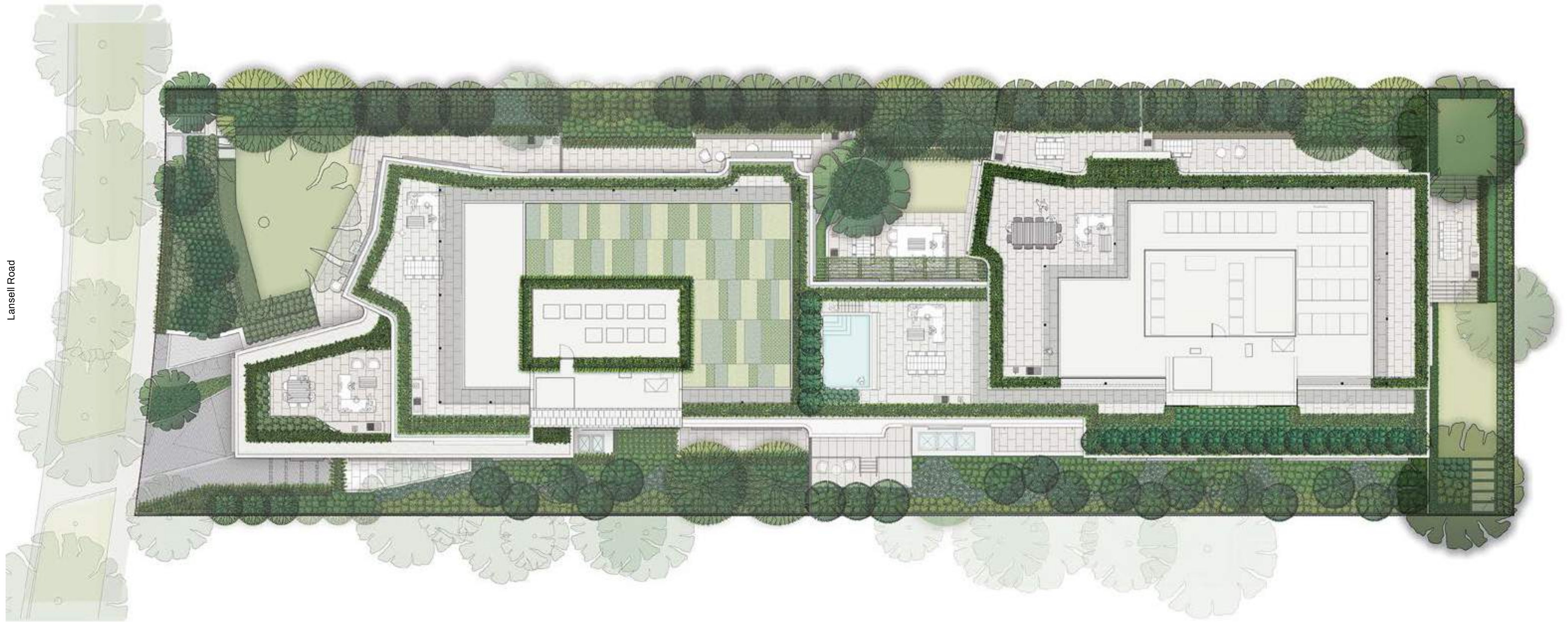


Lansell Road – Northern Elevation



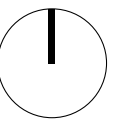
Lansell Road – Southern Elevation





Lansell Road

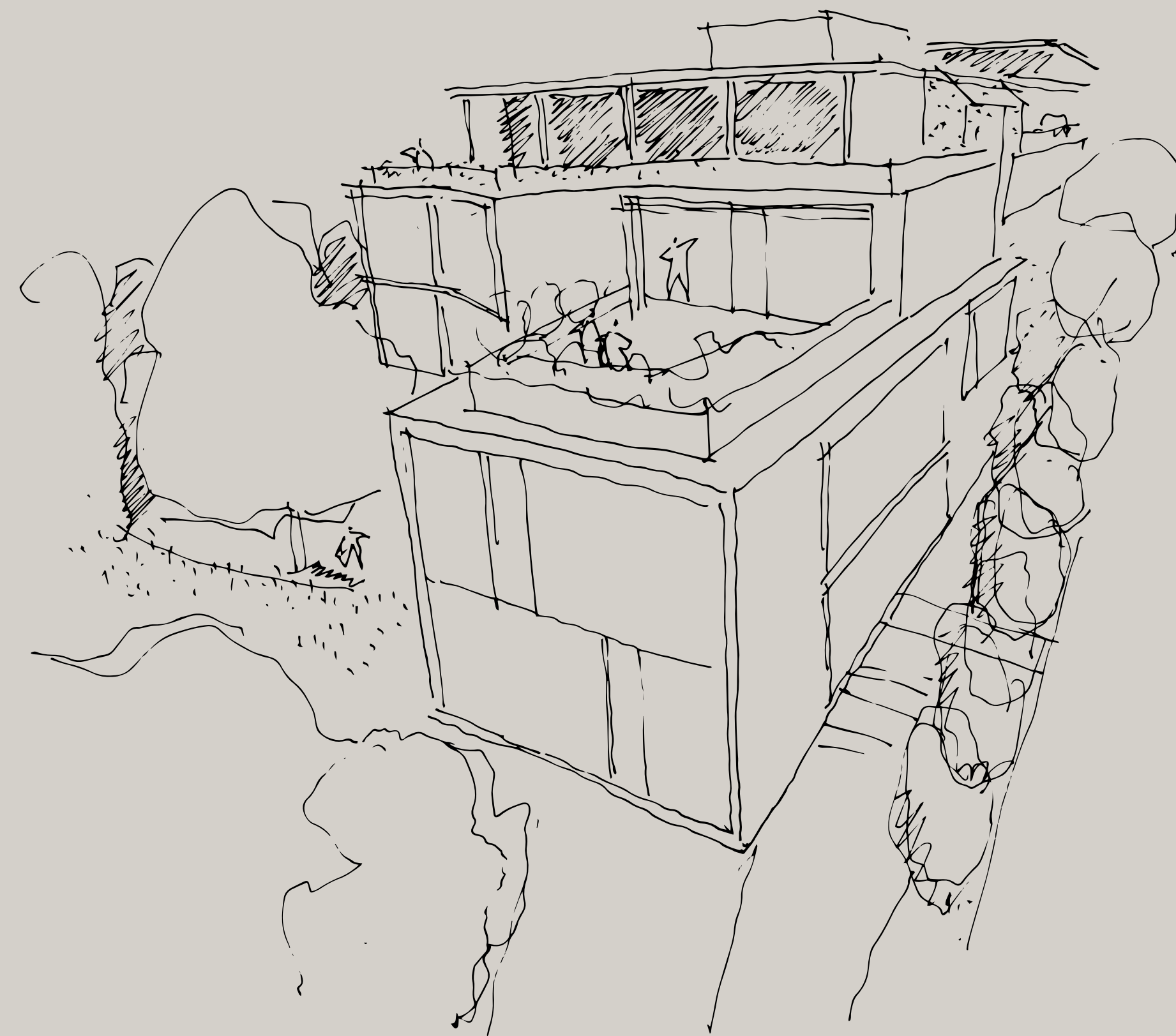
Site Plan







Lansell Road Elevation



#### Landscape Design (2019)

The terraced and sweeping form of the building integrates into the surrounding landscape.



The background of the entire page is a dark, moody photograph of green leaves. The leaves are in various shades of green, from deep forest green to lighter, almost yellow-green, suggesting sunlight filtering through the canopy. The focus is soft, with some leaves in the foreground being sharper than others in the background. The overall tone is natural and serene.

# The Forest Floor

GROUND FLOOR RESIDENCES





Jack Merlo - Kenley, Toorak

## A Connection To Nature

Unseen in any other development, The Lansell features large private garden terraces with lawns for many of its homes.

Here on what we call the “Forest Floor”, intimate indoor and outdoor connections are provided directly from the main living spaces to provide a strong engagement with nature and light. Gardens are carefully placed alongside large glass openings to create opportunities for entertainment, relaxation and engagement.

As the landform terraces up the site, this ensures that every garden is unique and private; each with its own identity. The vegetation also tells its own story, with evergreens placed on the north side providing privacy year round, whilst deciduous trees on the remaining sides provide variation from season to season.

Homes at higher levels also enjoy this connection to the landscape from the terraced nature of the gardens to those above the tree canopy, where each residence has clear views of Toorak & the Melbourne surrounds.

The Lansell has been carefully designed to allow the occupant to enjoy the picture-perfect private gardens from the comfort and security of their homes.



### Landscape Integration (2019)

The interior areas flow and connect seamlessly to the exterior areas and landscaped gardens.

















# Intelligently Considered

INTERIOR SPACES





# Timeless Design

The Lansell appeals to a discerning homeowner, with sophisticated and mature taste; one who appreciates the best the world has to offer.

From the moment of arrival into every home, residents are greeted with generous lobbies, walkways and private entry foyers. Spaces at The Lansell are generous and comfortable with excellent natural lighting and cross ventilation throughout.

Living areas have fireplaces to celebrate ones collection of fine art and objects, with some apartments having both the luxury of formal and informal living rooms and studies. Feature lighting throughout creates opportunities to set a number of moods complemented by dappled light through the leafy forest canopy.

The generous main kitchen forms the focus of the home where the art of cooking is the centre piece. The crafted kitchen system is elegantly designed and skillfully crafted. These are enhanced with appliances and tapware from German premium brands: Gaggenau, Liebherr and Hansgrohe all highly renowned for their quality.

The kitchens also feature an oak finish with San Marino marble tops creating a level of opulence befitting such a home. Butler's kitchens are provided in most homes ensuring that practicality is balanced with impeccable quality.



## Interior Design

The interiors have been designed to be timelessly elegant, simple and plush.











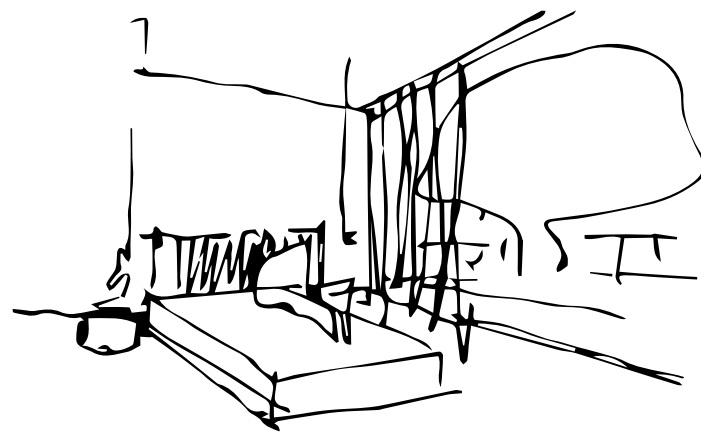
# Private Sanctuary

Finished in warm and enveloping materials like plush wool, the generously sized bedrooms can accommodate King or Queen-sized beds. All the bedrooms enjoy a strong connection to the landscaping with many of the ground floor bedrooms connected seamlessly to their private gardens. Privacy has been achieved through the lush landscaping and carefully placed windows.

External venetian blinds have been included for a number of windows for both sun screening and improved privacy.

Luxuriously crafted wardrobes are beautifully finished inside and outside in oak and glass. Soft close mechanisms provide a delicate touch and internal cabinet lighting are provided for the Master wardrobe.

Each set of cabinets has been designed to fit seamlessly into the bedrooms with these extra luxury features. Master bedrooms enjoy generous connected walk-in wardrobes, some with island benches.



### Details in Design

Sumptuous details and meticulous craftsmanship are on show at The Lansell.





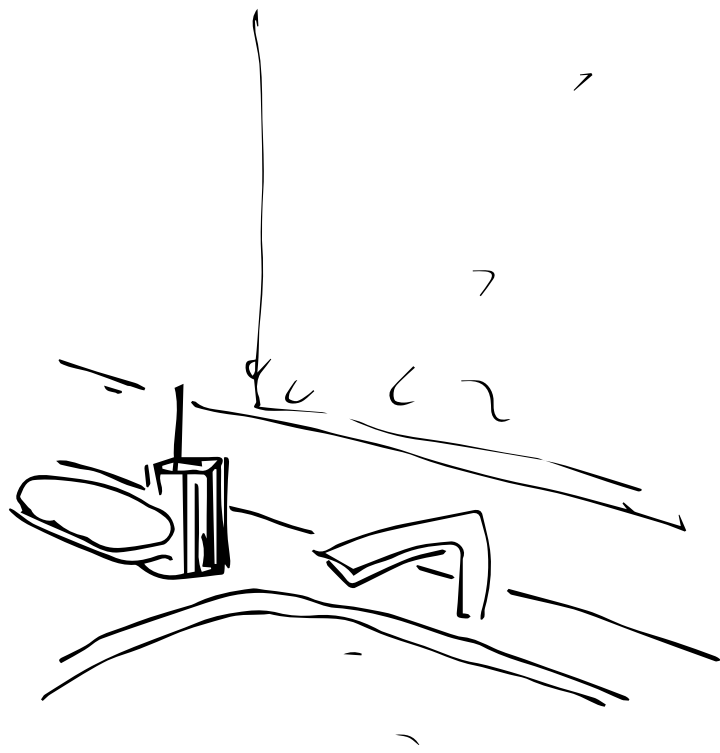


## Life in Light

En-suite bathrooms are a predominant feature of nearly all bedrooms, with an abundance of natural lighting throughout.

In these spaces, bathing is something to be enjoyed with bathrooms that have been finished with a timeless material palette connecting to the ethos of the Lansell. Limestone, marble and oak veneer envelope the surfaces, complemented by soft lighting and a stone counter that creates a truly luxurious experience.

Thermostatic shower mixers, rain showers and luxury tapware are provided by Hansgrohe. The open shower space with a generous bathtub and separate water closet space for the Master bathroom also enhances the premium experience.



### Luxury Fittings

Opulent finishes and luxury fittings highlighted with mood lighting, enhances the bath experience.









## Finishes & Materials

A collection of timeless, textured and premium materials have been brought together to enhance the experience of living at The Lansell.

From the moment of entry into the building, one is greeted with incredible attention to detail and craftsmanship. From natural stones, to timbers and quality fixtures and fittings, each space has been curated to complement the architecture and its surrounds.

These selections all work in unison to provide a palette that is customisable and versatile for personalisation, yet has a quiet confidence that is strong on its own. The result, a palette of impeccable quality and taste.



## Hansgrohe

The Hansgrohe company history began in 1901 in Schiltach, Germany and continues today with innovative bathroom and mixer fittings famous for their functionality, design and quality. Today Hansgrohe generates worldwide sales of 1 billion Euro and works with designers such as Phillip Starck to bring fittings to discerning customers seeking the best in quality and design.

## Gaggenau

The Gaggenau history can be traced back to 1683 in a metalworks producing enamels and stoves. Gaggenau continues to progress with the times, producing high quality kitchen appliances using the latest innovations and best materials. Coupled with its commitment to craftsmanship, design as artisitic engineering and quality, Gaggenau continues to set the standard in premium kitchen appliances.

## Liebherr

Headquartered in Germany since 1954, Liebherr Appliances produces more than 2.1 million fridge-freezers and wine cabinets every year. Liebherr appliances are German-engineered and produced under the highest international standard and is synonymous with quality and excellence.



A dark, moody photograph of green leaves, likely from a tree, with a white overlay for text. The leaves are in focus, showing their serrated edges and veins. The background is a soft, out-of-focus green. The text is positioned on the right side of the image.

# Connections To The Canopy

PENTHOUSE RESIDENCES

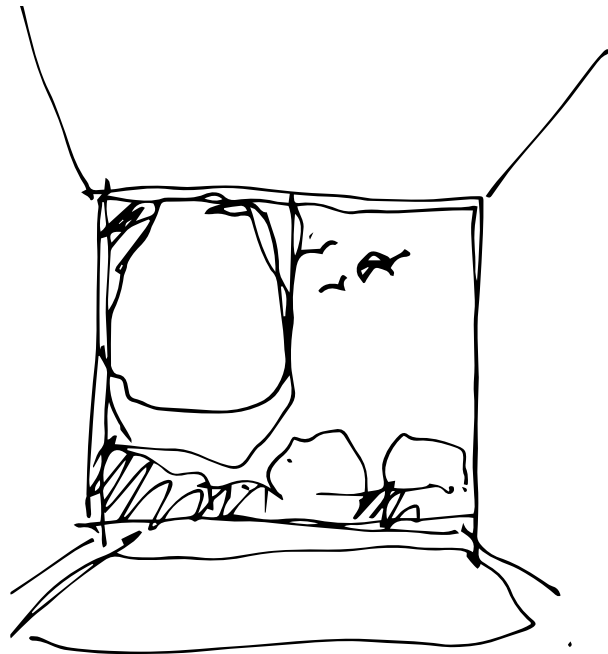


# An Elevated Lifestyle

The Lansell enjoys a natural elevation which provides all homes with interesting aspects. Extensive glazing has been used to maximise the best views.

Expansive terraces and planters viewed through large glass panels create an intimate interaction between the internal and external areas; bathing the living spaces adjacent in natural light.

The tree canopy adds another layer of interest with light coming through the greenery illuminating the homes in an expressive manner. At higher levels, the green canopy gives way to 360 degree views over the tree-lined neighbourhood of Toorak with the Melbourne city skyline visible at the horizon.



**Surrounding Skyline**  
Views of surrounding skyline are framed by the lush garden landscaping.











## Migration of Life

The expansive homes at The Lansell create an easy transition for those downsizing to a simpler and more secure lifestyle. Each home has been carefully considered for ease of use, privacy and security with few neighbours around. A generous sense of space has been maintained in every home with an intimate connection to the surrounding greenery.

Internally, each Lansell home features large spaces to display art and mementoes. There is also an ability to customise the space to fit your lifestyle and desires; whether it be for work, collections or entertainment. The neutral but premium palette throughout also allows you to layer your personality and create your unique home.

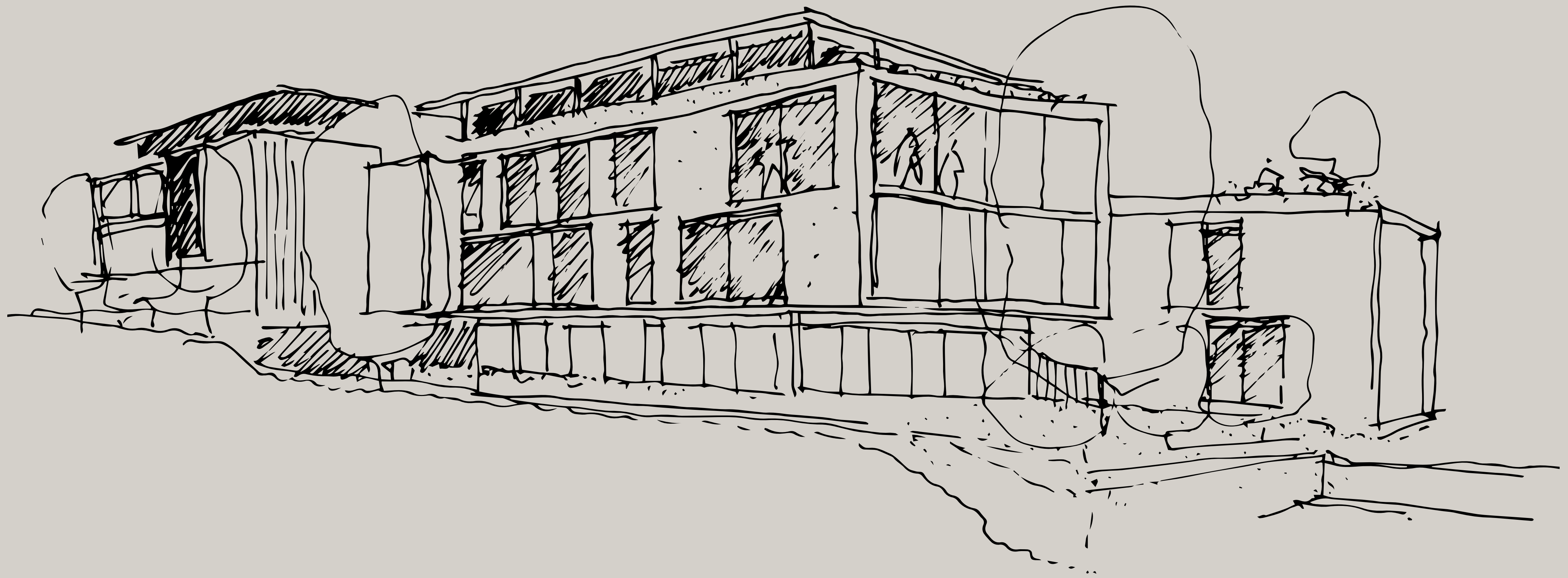
As a development, The Lansell has been considered carefully to fulfil its aim to be amongst the most luxurious and desirable boutique developments in Melbourne. A development where a new level of luxury with the convenience of living in a managed building with concierge and security services awaits you.



### Layers of Personality

Elegant interiors are finished in a luxurious palette of warm materials.













# The Fabric Of Toorak

THE LOCALE





### A Village Atmosphere


Located at 16 Lansell Road, The Lansell is just 700m or a pleasant 8-minute walk from Toorak Village. A truly wonderful location within the A Grade prestige and exclusivity of the homes of Toorak. There is an elegant atmosphere amongst the quiet roads of this location with large homes surrounded by mature greenery. A number of small churches nearby are punctuated by greens around the quaint shops and restaurants of Toorak Village, making this the epitome of lush living in Melbourne.



Toorak Village provides a mix of charming and convenient shops and restaurants.

Above: Toorak Village  
Left: Lansell Road



A full-page photograph of a tree-lined path in Toorak, Melbourne. Two joggers are seen from behind, running along a paved path that curves through lush greenery. Large, mature trees with dense foliage frame the path, casting shadows on the ground. In the background, a white building is visible through the trees. The overall atmosphere is peaceful and scenic.

As part of the governed area of the City of Stonnington, Toorak boasts beautiful leafy streets and is renowned for the charming village atmosphere of its high street – Toorak Road.





Greenery and parks are abundant in Toorak.

Above Right: Yarra River  
Left: Mammoth Cafe  
Below: Sonny Chiba





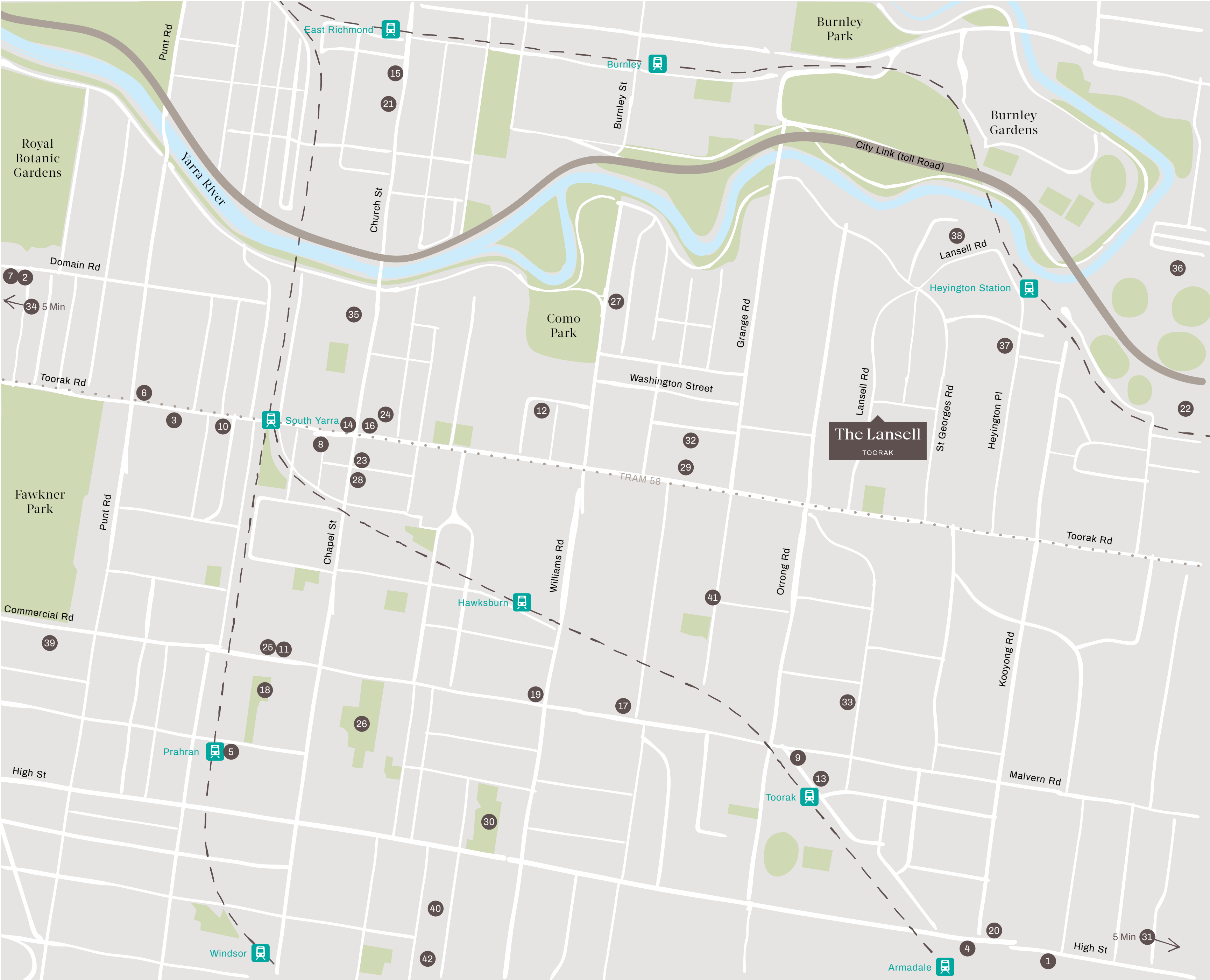


Above: Mammoth Cafe  
Below Left: Scanlan & Theodore  
Right: Woodfrog Bakery

A great mix of food and shopping.







## Food & Bars

1. Amaru
2. Baker D. Chirico
3. Bar Carolina
4. Bouzy
5. Entrecôte
6. France Soir
7. Gilson
8. Lona Misa
9. Mammoth Café
10. Ned's Bake
11. Q'Le Baker
12. Stables of Como
13. Toorak Cellars

## Shopping & Recreation

14. Capitol Grand (Specialty stores)
15. Coco Republic
16. Como Centre
17. Grace
18. Grattan Gardens
19. Hawksburn Village
20. High St Armadale
21. Jordan
22. Kooyong Lawn Tennis Club
23. Marimekko
24. Palace Cinema Como
25. Prahran Market
26. Princes Gardens
27. Royal South Yarra Tennis Club
28. Scanlan & Theodore
29. Toorak Village
30. Victoria Gardens

## Health & Education

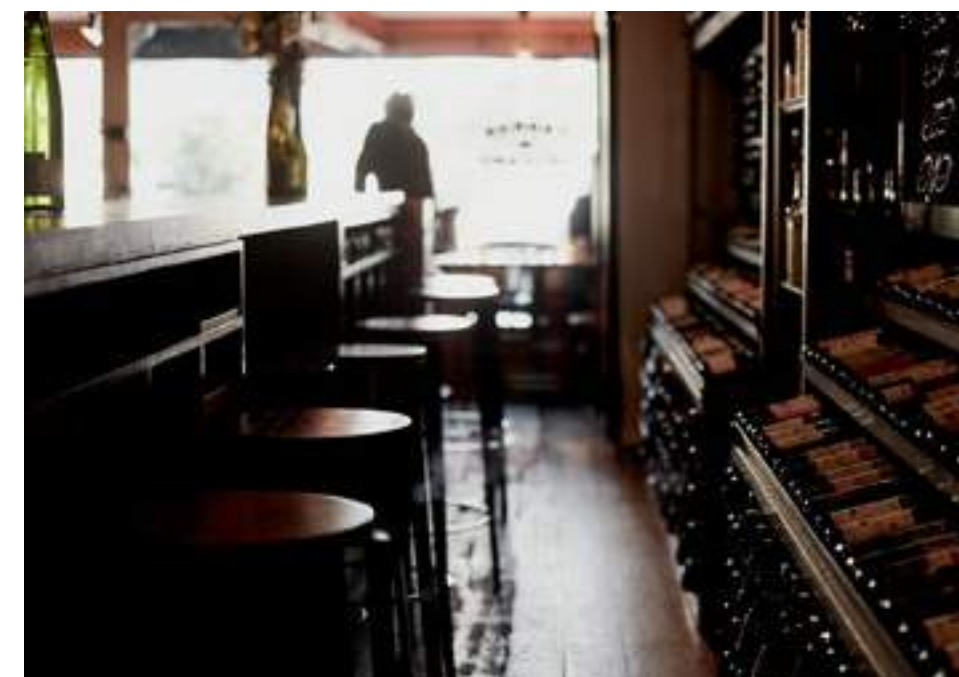
31. Cabrini Malvern
32. Geelong Grammar School
33. Loreto Mandeville Hall Toorak
34. Melbourne Grammar
35. Melbourne High
36. Scotch College
37. St Catherines School
38. St Kevins College
39. The Alfred Hospital
40. The Avenue Hospital
41. Toorak Primary School
42. Windsor Private Hospital





Easy access to Melbourne City and surrounding areas.

Above Right: Toorak Road  
Left: Toorak Cellars  
Below: Toorak Cellars







# Makers & Creators

TEAM & COLLABORATORS



“We believe in providing quality and value through careful, innovative and thoughtful selection for our clients. This is our ethos.”

PENG SEANG, SHC GROUP





K2LD

We are an international architecture and interior design practice with a vision to Nurture the Future. With offices in Singapore and Melbourne, we're a proud, passionate and diverse group of individuals who combine to create great outcomes for our clients and the urban environment.

It's in our differences that we find our distinctiveness, and that shows in our work – from all scales of single or multi-residential and commercial developments, through to public and private education and infrastructure projects throughout the region.

No project is identical. For us, the chance to explore new considerations and opportunities, and create bespoke products is why we love the work we do. We focus on the collaborative process ahead. This allows us to develop solutions that can positively impact the community around us.

k2ld.com

YARRBAT, BALWYN  
HEARTWOOD, TOORAK



YARRBAT, BALWYN  
HEARTWOOD, TOORAK



SPRINGFIELD, TOORAK  
MONUMENT, ARMADALE



COLLECTION XI, HAWTHORN EAST  
MONUMENT, ARMADALE





SHC Group

SHC Group is a multi-award winning developer and established investment company who has undertaken projects around the world. This includes apartments, residences and boutique hotel projects in Singapore, Malaysia, Indonesia, Japan and Australia.

In Melbourne, SHC Group has completed the luxury apartment project at Springfield Toorak and a 252 apartment unit at Nest at the Hill, Doncaster. The Group also recently launched Heartwood Toorak and Monument Armadale luxury apartment projects.

SHC Group takes pride in developing projects with unique concepts and excellent design, bringing ideas to life with both beauty and functionality.

Awards received for their projects include RAIA 26th National Architect Award, SIA Architectural Design Award 2001, 2004, 2006, 2010, 2012, Asian Habitat Award 2006, Cityscape Architectural Review International Award 2005 and most recently Asia Pacific Property Award 2019.

SHC Group continues to expand its property portfolio in Japan and around the region with a series of exclusive projects with emphasis on quality, unique design, attention to detail and delivery.

[sinhengchan.com.sg](http://sinhengchan.com.sg)

MIRU AMAMI, JAPAN  
WATTEN RESIDENCES, SINGAPORE



VICTORIA PARK BUNGALOWS, SINGAPORE  
MIRU NISEKO, JAPAN



MONUMENT, ARMADALE  
NEST AT THE HILL, DONCASTER



SPRINGFIELD, TOORAK  
HEARTWOOD, TOORAK





Jack Merlo

Renowned for his impeccable landscape architecture and collaborative approach, Jack Merlo and his team elevate outdoor spaces through principles of beauty, harmony and sustainability.

With his attention to detail, and his highly considered designs to suit a wide range of private house styles in Melbourne's most established suburbs, Jack's reputation soon grew along with the size of his South Yarra studio.

Jack enjoys close working relationships with many leading architects and developers, and is highly sought after as a partner on high-end, multi-residential projects. In recent years he has designed landscapes that range from private courtyard gardens to expansive rooftop lounges and many other innovative outdoor spaces.

Jack Merlo takes pride in bringing a unique architectural approach to landscape design, creating spaces that people will appreciate for years to come. Each new project is an individual and considered response to the vision of his client, bringing an ordered and organic form to the built environment.

[jackmerlo.com](http://jackmerlo.com)

KENT CT, TOORAK



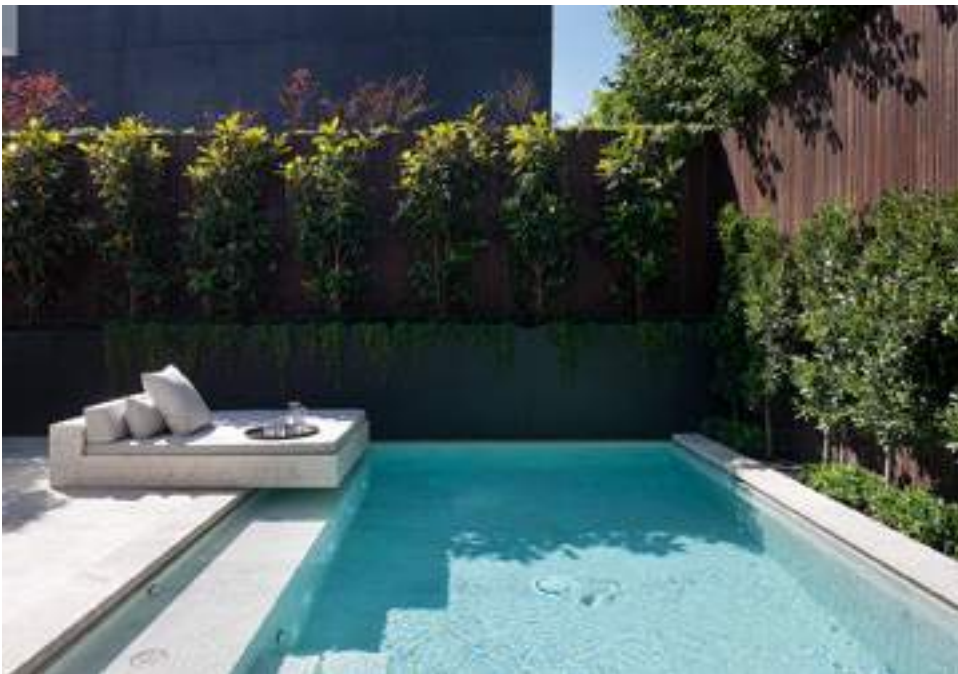
KENT CT, TOORAK



KENLEY, TOORAK



KENLEY, TOORAK







## Project Team

**Developer**  
SHC Group

**Architects**  
K2LD Architects

**Interior Design**  
K2LD Interiors

**Landscape Architecture**  
Jack Merlo

**3D Visualisation**  
Binyan

**Showroom**  
Kovstruct Pty Ltd

**Faucet & Bathroom Fittings**  
Hansgrohe

**Kitchen Appliances**  
Gaggenau

**Urban Planners**  
Urbis

**Structural & Civil Engineering Consultant**  
EDGE Consulting Engineers

**Services Engineering Consultant**  
MAC engineering Solutions

**Building Surveyor**  
Philip Chun

**Fire Engineering Consultant**  
Omnii

**Land Surveyor**  
Veris

**Arborist**  
Rob Galbraith



# The Lansell

TOORAK

While this brochure reflects the proposed development at the time this brochure was created, the information provided is general in nature. The images, designs, layouts, dimensions, characteristics, finishes, fixtures and fittings and other information contained in this brochure (Property Information) are indicative only and subject to change without notice. We recommend that you undertake your own enquiries, obtain independent legal advice and confirm the current Property Information at the time you enter into any purchase contract. This brochure does not constitute part of an offer or contract. Furniture and home decorator items shown are not included in the purchase price. This offer does not constitute part of an offer or contract. Lansell Properties Pty Ltd ACN 633 952 664 and its associated entities do not accept any liability for any reliance upon this brochure.



