

Monument

The Power of Purity
24 Parkside Residences
608 Orrong Road Armadale

Monument.
The Power of Purity.



**An Armadale
Landmark.**



Artist impression

Introducing Monument

Beautiful by definition and impossible to ignore, Monument is a landmark building setting a new benchmark for progressive design in Armadale. Rising seven levels and comprising twenty-four parkside residences, including two penthouses, Monument is the perfect balance of pragmatism and purity.

Brought to you by Chapter Group, SHC Group and K2LD, Monument is about strength, confidence and restrained simplicity of design. With interiors that reflect a distinct sense of natural beauty they make a valuable and lasting impression. This level of excellence can only be achieved by a singular design team. From K2LD comes a 'shared mindset' across architecture, interiors and landscape, integrated together to create the highest quality of finishes, materiality and architectural design. Together they have created a building where all external and internal living environments come together in a seamless, soft and sensitive way.

Put simply, Monument marks a rare moment in inner-city residential architecture. Sophisticated and considered, it's for those who genuinely appreciate outstanding design and a statement of confidence for those who like to stand out.



Artist impression looking north west, across Orrong Romanis Reserve

**A bold
statement.**





Artist impression

The Architecture

It's crisp, it's contemporary and a little provocative. Monument's architecture is distilled into its simplest and most functional form – a beautiful element designed to be appreciated.

K2LD has drawn on the thinking of some of last century's most influential architects – on light, colour and place – to design a new modern addition to Armadale. On one hand, it rises as a thoroughly modern concept. It is a radiant structure with an uncompromising, monolithic shape, exuding a cutting-edge presence. On the other, it is a nod to the traditional aesthetic of modernist architecture, championed by visionary architects, Mies Van Der Rohe, Le Corbusier and Richard Meier. Their architectural expressions naturally feel like iconic structures, referencing white as a 'vessel' to reflect surrounding colours.

The architectural structure is based on blockwork in modern 'stacked form' arrangements, extending vertically to enhance the building's sense of height and scale. The exterior features handlaid white blockwork, uncomplicated and elegant, while equally modern.



Monument avoids competing with its natural environment and the adjacent parkland. The form of the building is broken down and softened with highly refined considerations. Windows and balconies create gentle 'indents' throughout the building, seemingly carved into the masonry mass and allowing light within. Greenery spills from the terraces and rooftop, complemented by lush trees within courtyards. Articulation is accented by perforated bronze screens and louvres, which shimmer in the sunlight alike an illuminated jewellery box.

**A
vision
of
style
and
luxury.**



The Lobby

Designed as a true statement of style with a gallery-esque atmosphere, the lobby is an exercise in refined elegance.

With a central void rising three levels, the space is anchored by a sculptural pendant light by Bocci. Also with a concierge service, the Monument lobby offers convenience and discretion.

Contrasting with the form of the exterior building, this sophisticated entrance is resolved to evoke a soft and subtle ambience. It is also the perfect prelude for the warmer, textured material palette that inform the residences within.



**Effortless
elegance.**

The Residences

The approach to interiors is nothing short of true artistry. With a very honest and authentic design philosophy it gives way to a series of living environments that portray effortless beauty. Pared back and subtle, the residences feature a simple material palette with extensive stone, bleached timbers and a playful array of natural textures, complemented by muted, neutral colours.

The same thinking applies to layout and light. Highly considered, pragmatic and thoughtful, all residences are open plan and oversized, with delicate LED lighting techniques used to create smaller, ambient zones and highlight sculptural elements. Abundant natural light flows through each residence from either north, west or east. Above all, the interiors are a canvas for residents' lives. Beautiful and textural, they're designed to create memorable impressions in every moment.



Residences facing Orrong Romanis Reserve are designed to feature deliberately 'framed views' of the park, allowing for a connection to nature that few others can claim so conveniently.





For effortless relaxing or entertaining, Monument's living spaces are large and extend the minimal, textured interior aesthetic. Framed by bleached oak floorboards and textured, light wall renders, they provide a neutral space that can be personalised. Some residences feature a hero fireplace that is 'carved out' with recesses and a glass shelving inset.





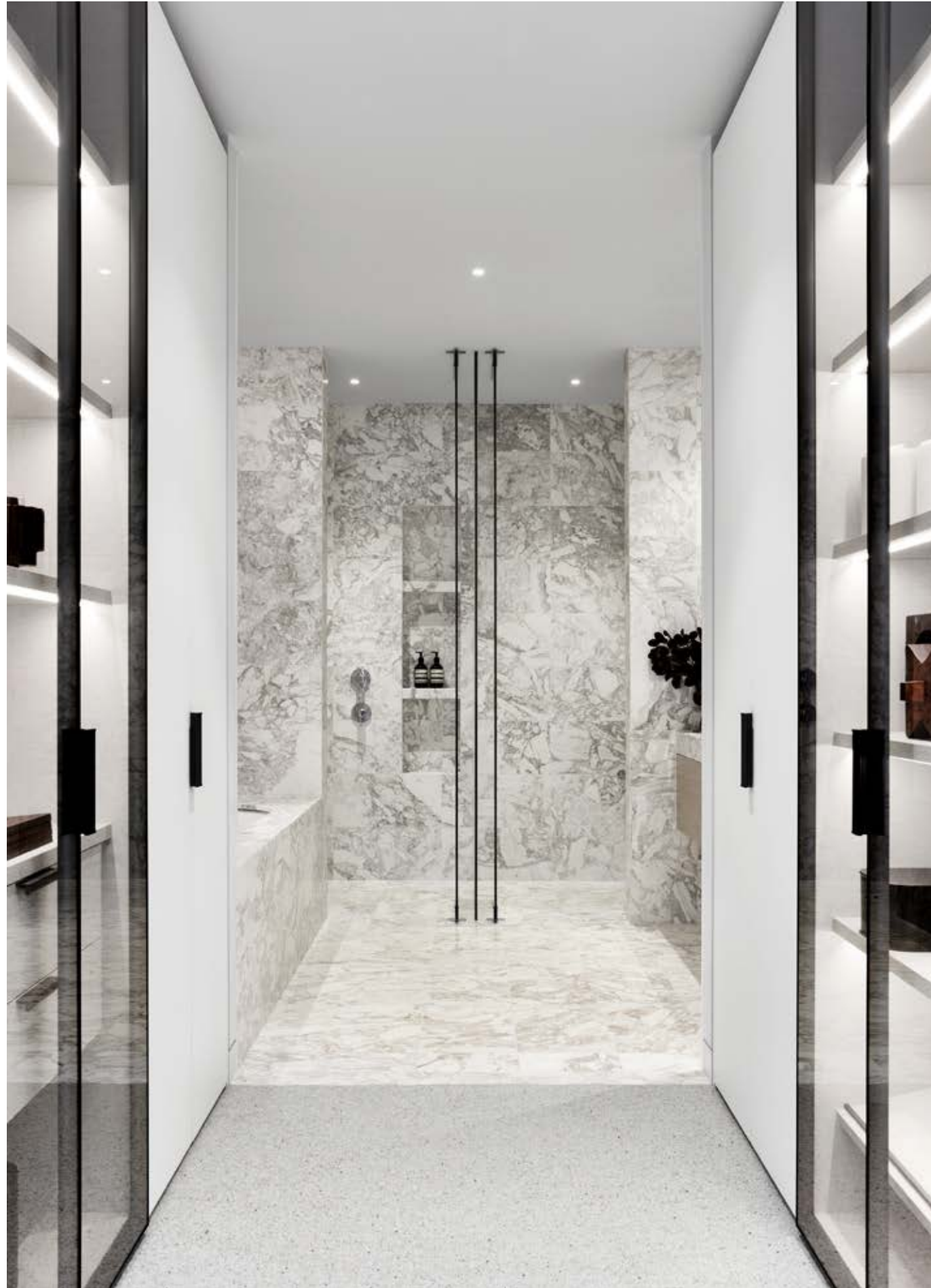


Every Monument kitchen is a focal point of the residence. The modern design acts as an effortless transition between day and night. Exceptionally large in size, anchored by a bold sculptural natural stone island bench, the space boasts extensive use of imported stone, including a custom stone sink. Finished with minimal, functional and beautiful detailing, the kitchens feature Italian systems by DADA, full suites of Gaggenau appliances, integrated Liebherr fridges and Hansgrohe tapware, selected residences are also fitted with hot and cold filtered water taps.



Dada
hansgrohe
GAGGENAU





While other rooms are expansive and light-filled, the master ensuite offers a feeling of being encapsulated in luxury. Fully clad in natural stone across the built-in bathtub and double vanity, each bathroom includes a sensual curved shower. Concealed feature lighting (LEDs) soften the materiality and angles throughout the space, adding intimate light. With a large statement mirror, Hansgrohe fittings including a rain shower and a vanity fitted with natural stone, these spaces become a true sanctuary of calm and quiet.



hansgrohe

Display suite photography



Mirroring the design approach to the living rooms, the bedrooms offer picturesque views looking over the city, park or rooftop aspects, allowing for abundant natural light. They also feature highly detailed Italian wardrobes by Molteni&C, which include a mix of glass and solid cabinetry to display prized possessions.



Artist impression



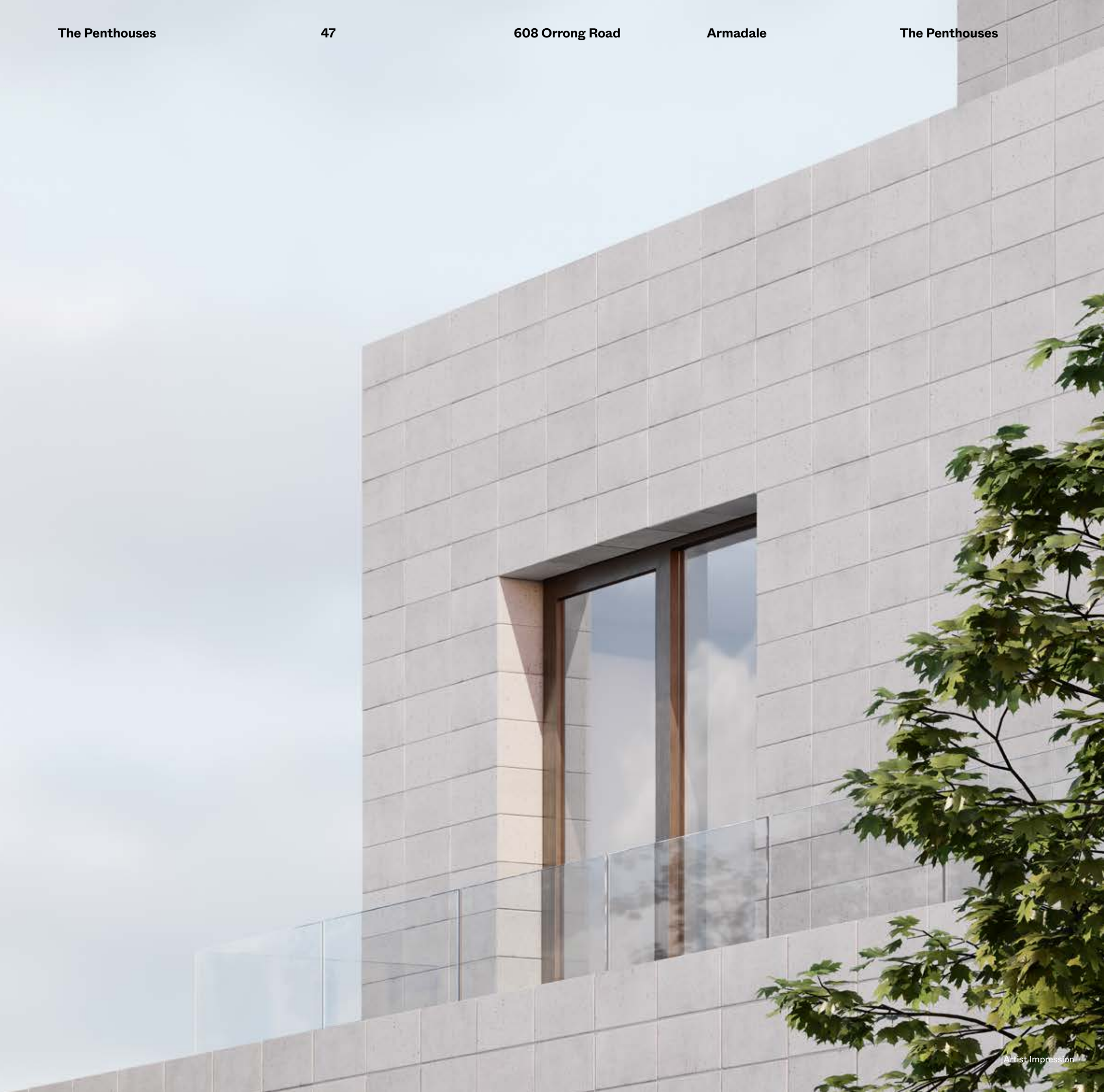
Display suite photography

**The
pinnacle
of**

**Armadale
living.**

The Penthouses

As the ultimate expression of pride and prestige, the highest point of Monument provides two extraordinary penthouses for those who wish to see and be seen. Continuing the sophisticated, sculpted detailing throughout the building, each penthouse takes the journey of living at Monument to the next level with extraordinary views in every direction. With substantially larger floorplates, overflowing landscaping, lush tree plantings, private garages, access via direct lift and the rare addition of a swimming pool, the Monument penthouses are designed with the ultimate level of opulence.



The Fourth Floor penthouse is like a ‘house in the air’! With aspects over the adjoining green roof and a large swimming pool, its elegant outdoor space is of a similar size to the residence itself, providing a sense of living on a quintessential Australian quarter-acre block.





Artist impression

Both penthouses showcase feature walls that are textured in a subtle render treatment, paired with flooring and joinery in a smooth, neutral palette. In its restraint and relative simplicity, Monument's interior spaces can create a calming, delicate sense of serenity, allowing for genuine quality and craftsmanship to be on display.



Artist impression of Fifth and Sixth Floor penthouse rooftop

The Fifth and Sixth Floor penthouse is a true sky home, split across two levels, with dedicated wings for living and sleeping. It culminates in a rooftop entertainment zone with a heightened swimming pool, embracing sweeping city views to the north and reserve park views to the west.

It also features a captivating, architectural, curved staircase that joins the two levels. With a double height void, circular skylight and windows that view to the north, it is a highly sophisticated entrance experience. Following the minimal, light and bright palette of the other levels, the stairs are fitted with engineered oak treads with textured balustrades and walls.



Artist impression



Artist impression

Smart

safe

and

automated.



Artist impression of perforated bronze screen

A Smart Building

From car park to roof top, Monument includes a suite of technology-enabled, sustainability-focused initiatives that set a new standard for contemporary residential living. But this isn't just about numbers and ratings, on a very human scale, numerous practical measures are installed to take care of residents and help them experience the real joy in the building.

With the latest-technology access and security systems, including a fully integrated intercom in every residence, smart swipe-card access to the building and remote access to the carpark, Monument makes everyday travels a smooth transition.

A Legrand home automation system is equipped in all residences, it is fully compatible with Alexa and Google Home, as well as enabling the user to access the system remotely using the app – MyHome_Up.

Monument is proof smart initiatives can also add to the aesthetic of the building. The façade features custom-designed perforated bronze louvre systems and privacy screens, that shimmer in the sun. The louvre systems are fitted to selected terraces, enabling residents to moderate natural light and noise, reduce heat gain and optimise privacy. For the environmentally conscious, Monument features a 7.5 Star average NatHERS Energy rating, green roof with integrated solar technology, ESD daylight modelling, and water efficiency technology.



Artist impression of fourth floor green roof



Display suite photography of Legrand automation keypad

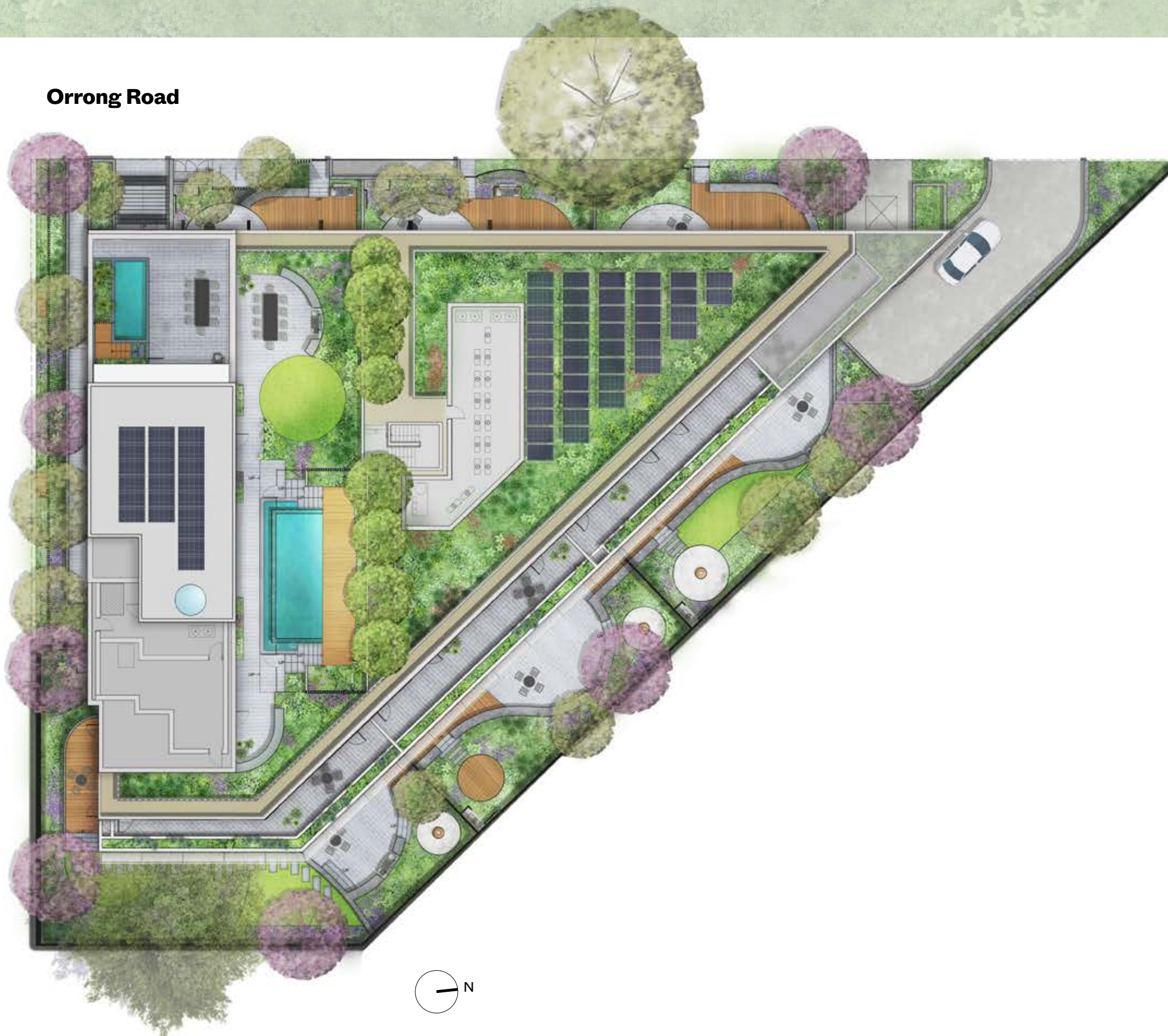
Nature.

A true

connection.

Orrong Romanis Reserve

Orrong Road



The Landscape

Monument's position and place respects and celebrates the adjacent parkland of Orrong Romanis Reserve. The triangular footprint of the building offers most levels unimpeded views to the west that extend all the way around to the north and east.

The landscape vision is brought to life by Australia's most awarded landscape architecture practice, Taylor Cullity Lethlean (TCL), it features a 'hand-picked, human-centred' approach inspired by the lush greenery of the adjacent Orrong Romanis Reserve. This sensory experience re-defines the style and sophistication of modern apartment living in a poetic, creative and collaborative way that integrates and respects nature.

A key consideration to human-centred design is to engage all five senses achieved through spatial layouts and material selections ensuring the outdoor spaces at Monument are beautiful, balanced and memorable. This is expressed through the continuity and seamless integration between the built form and every natural element. Rich, visual layering strengthens the connection to the reserve with light, uncomplicated greenery highlighted by deciduous trees, low-level palms and pops of floristic colour.

Deliberate, considered and connected, Monument is a celebration of nature as much as a celebration of architecture.

Each residence features a spacious outdoor terrace, landscaped terrace or large ground-floor courtyards with smaller breakout garden areas. Refined and tranquil, each space is designed for entertaining or relaxing, some with detailed finishing, mature greenery, quality stone, planter edges and blade screens that integrate harmoniously to create individual places of rest and repose.



Orrong Romanis Reserve

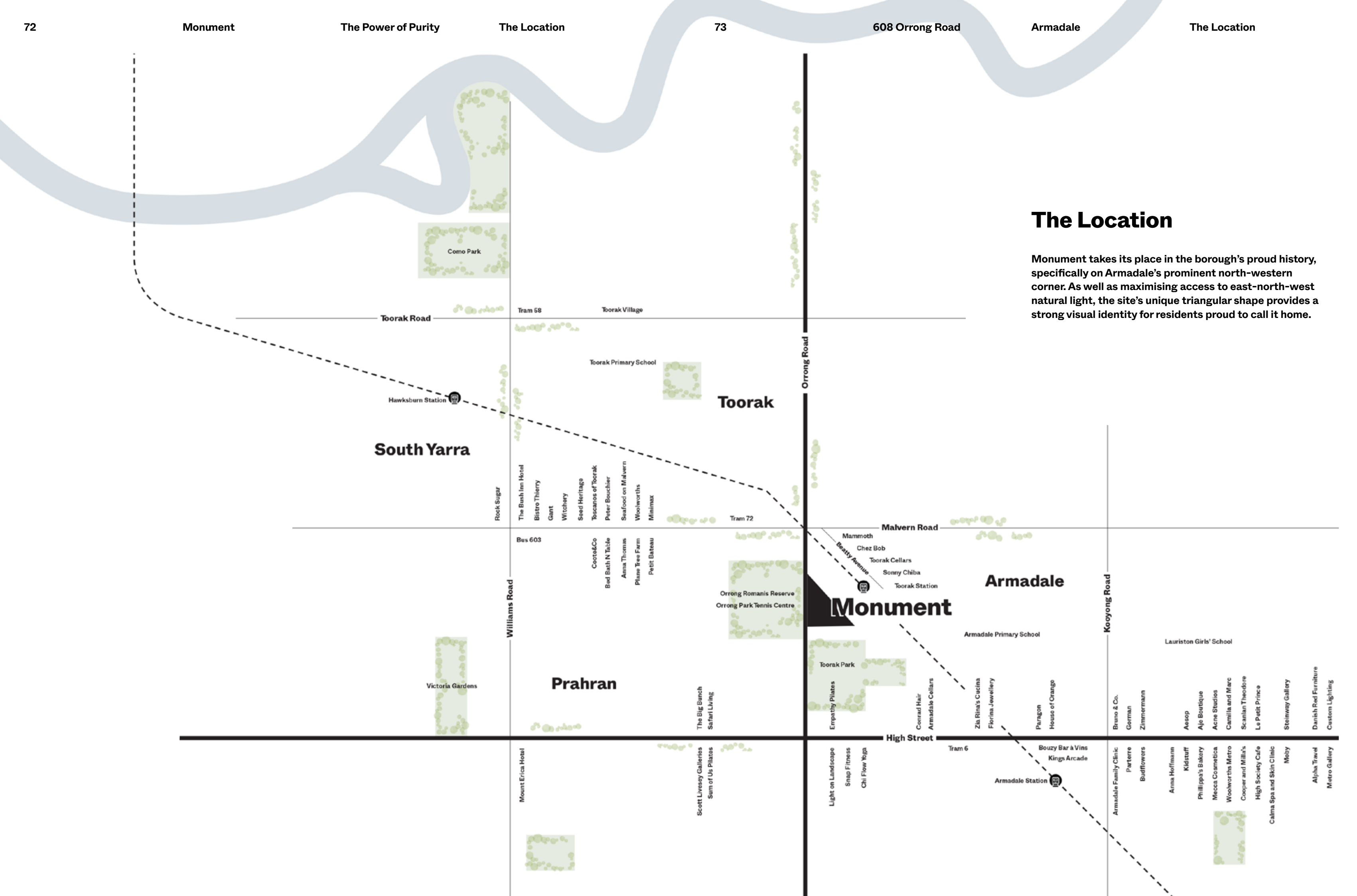
At Monument, Armadale's rarest asset is just over the road. Orrong Romanis Reserve is pristine, prominent and one of the area's only large green spaces, providing fresh relief from the hustle-and-bustle and a genuine connection with nature.



Pride and

prestige.

Armadale.



The Location

Monument takes its place in the borough's proud history, specifically on Armadale's prominent north-western corner. As well as maximising access to east-north-west natural light, the site's unique triangular shape provides a strong visual identity for residents proud to call it home.



Sonny Chiba Restaurant – Beatty Avenue



Mammoth Cafe – Beatty Avenue



Toorak Cellars – Beatty Avenue

In high demand and highly desired, Armadale remains a long-time, top liveable suburb for good reason. Locals love it for its inner-city proximity and laidback cool, while everyone else flocks to its urbane wine bars, hatted restaurants and high-end boutiques day in, day out.

Monument not only reaps all of the lifestyle and luxury of Armadale, its unique position bordering Toorak, Malvern and Prahran, also offers residents an expansive variety of amenity from their local area. Shopping precincts within walking distance include Beatty Avenue, Hawksburn Village and Armadale's famous High Street, offering everything from designer clothing to boutique organic produce.



Lee Matthews – Armadale

The Team

Talking about excellence is far easier than achieving it. But in Monument, the authentic partnership between SHC Group, Chapter Group and K2LD comes together once again following success with recent projects, notably The Springfield, Toorak.

Together, they demonstrate the singular team's successful 'shared mindset' to deliver its signature 'pure and authentic' design philosophy. Working hand-in-hand to design and develop from the ground up, the team retains a trusted and rare purity of vision to consistently deliver over and above buyer expectations.



SHC GROUP

SHC Group is a multi-award winning Singapore based developer and established investment company who has undertaken projects around the world. This includes apartments, residences and boutique hotel projects in Singapore, Malaysia, Indonesia, Japan and Australia. SHC Group takes pride in developing projects with unique concepts and excellent design, bringing ideas to life with both beauty and functionality. Awards received for their projects include RAIA 26th National Architect Award, SIA Architectural Design Award 2001, 2004, 2006, 2010, 2012, Asian Habitat Award 2006, Cityscape Architectural Review International Award 2005 and most recently Asia Pacific Property Award 2019. SHC Group continues to look for and develop projects that focus on superior design and quality. Their latest ventures include several residential apartments in Melbourne, Australia and boutique hotels and residences in Japan and Bali, Indonesia.

sinhengchan.com.sg



The Springfield, Toorak



The Nest, Doncaster

CHAPTER® GROUP

Chapter Group is founded on the core principles of excellence in design, quality and liveability. By bringing over 50 years of development expertise across all facets of the project life cycle, Chapter Group delivers exceptional outcomes through rigorous capital enhancement and astute risk management. This is underpinned by a commitment to establish a benchmark of excellence for each individual project, which has enabled Chapter Group to forge a reputation for delivering property projects of architectural distinction and unrivalled pedigree.

chaptergroup.com.au



Collection XI, Hawthorn East



The Springfield, Toorak

K 2 L D

We are an international architecture and interior design practice creating outcomes that sit at the intersection of three fundamental elements; a shared vision, a genuine collaboration, and a close connection.

We're proud, passionate and diverse group of individuals who combine great outcomes for our clients and the urban environment. With offices here in Melbourne, and in Singapore, together we each bring a slightly different perspective. It's in our differences that we find our distinctiveness, and that shows through in our work – from individual houses and community projects, through to multi-residential developments and large-scale commercial precincts. No project is identical; for us, it's about a journey each and every time and the chance to explore new considerations and opportunities is why we love the work we do.

k2ld.com



Heartwood, Toorak



The Springfield, Toorak

T.C.L

TCL is one of the world's most highly acclaimed landscape architecture and urban design firms. Over the past twenty-five years, TCL has delivered a wide range of projects across a variety of public and private settings, from urban waterfronts to desert walking trails. Working both nationally and internationally, TCL undertakes a detailed exploration of context, site and community, with a focus on the poetic expression of landscape and contemporary culture.

TCL's work is informed by four streams of investigation; contemporary urban life and global culture, the elemental power of site and landscape, artistic practice in a range of disciplines and the creation of a sustainable future. Through a dynamic and collaborative dialogue with clients, communities, academics and colleagues, TCL has delivered a diverse body of work that speaks of quality, commitment, beauty and richness.

tcl.net.au



The Australian Garden, Cranbourne



Towers Road Residence, Victoria



Monument

monumentarmadale.com

Disclaimer:

While this brochure reflects the proposed development at the time this brochure was created, the information provided is general in nature. The images, designs, layouts, dimensions, characteristics, finishes, fixtures and fittings and other information contained in this brochure (Property Information) are indicative only and subject to change without notice. We recommend that you undertake your own enquiries, obtain independent legal advice and confirm the current Property Information at the time you enter into any purchase contract. This brochure does not constitute part of an offer or contract. Furniture and home decorator items shown are not included in the purchase price. This offer does not constitute part of an offer or contract. Orrong Park Development Pty Ltd ACN 629 593 068 and its associated entities do not accept any liability for any reliance upon this brochure.

Creative by Assembly Branding

Monument



**CHAPTER®
GROUP**

K 2 L D